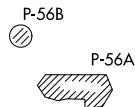


**TOP ALTITUDE:
3000**

ASOS 119.925
CLNC DEL
121.8 257.65
132.075 269.075 (When Tower Closed)
GND CON
121.8 257.65
MARTINSBURG TOWER ★
124.3 (CTAF) 233.7
POTOMAC DEP CON
126.825 239.025

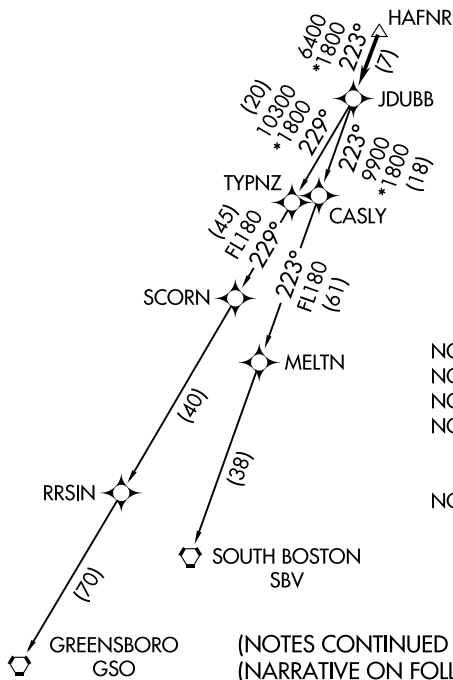


TAKEOFF MINIMUMS

Rwy 8: Standard
Rwy 26: Standard with minimum
climb of 225' per NM to 2100.

NE-4, 17 AUG 2017 to 14 SEP 2017

NE-4, 17 AUG 2017 to 14 SEP 2017



- NOTE: RNAV 1.
- NOTE: RADAR required.
- NOTE: DME/DME/IRU or GPS required.
- NOTE: Takeoff Rwy 8: If issued an ATC heading that requires a westbound turn, climb heading 079° to 1200 prior to turning for obstacle avoidance.
- NOTE: Takeoff Rwy 26: If issued an ATC heading that requires a right turn, climb heading 259° to 2400 prior to turning for obstacle avoidance.

(NOTES CONTINUED ON FOLLOWING PAGE)
(NARRATIVE ON FOLLOWING PAGE)

NOTE: Chart not to scale.